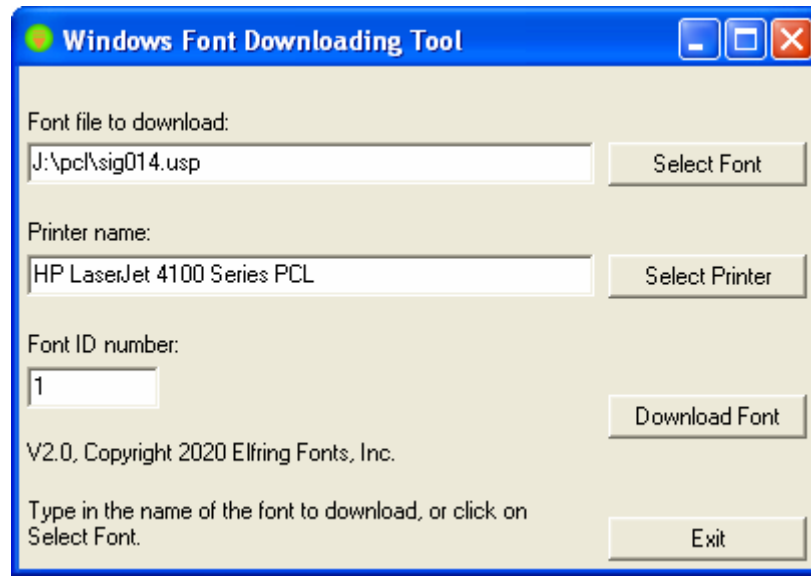


Downloadwin

The Downloadwin V2.0 utility is a Windows program that sends PCL fonts to any Windows printer. The printer must be PCL level 5 or above compatible. This utility runs in Windows 10 – 7, XP, & Server 2019/2016/2012. It sends individual PCL fonts to your printer. You can select any ID number for the font and have access to any Windows printer.



For ease of use you can make a desktop shortcut to this program in XP by right clicking on the program file and selecting "Create Shortcut". Drag this to your desktop. In Windows 10 – 7, right click on the program file and select the "Send to", and the "Desktop".

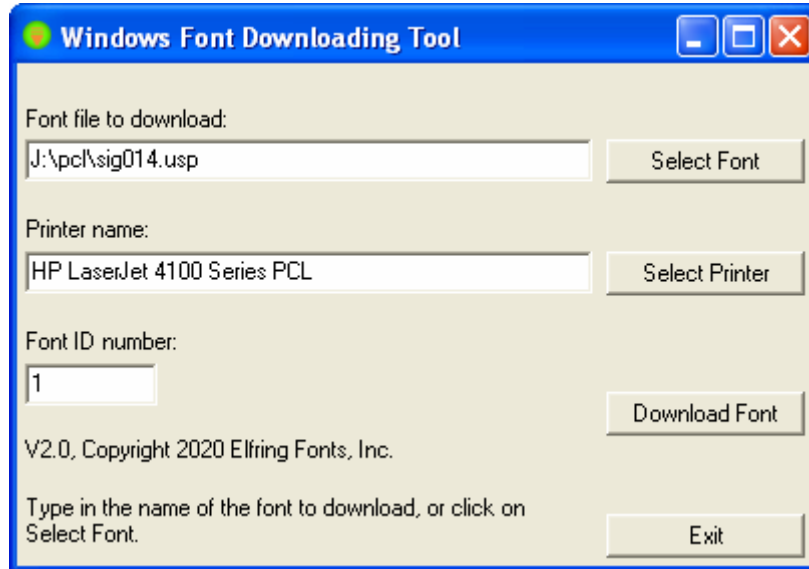
To download a font you must first specify the font to send to your printer. Either enter the full path and file name in the first box, or click on "**Select Font**" and select the individual font file.

Next select the printer to send the font to. The default printer for Windows appears by default. You can skip this step if you want to use the default printer. If you want to change the printer, click "**Select Printer**" and pick a printer from the list of current Windows devices.

Finally, every font sent to the printer must have a font ID. This number is assigned to the font when it is downloaded. If two fonts are sent to the printer with the same font ID number, the last one sent will **overwrite** the first one! So every font sent to the printer must have a unique font ID number. Downloadwin starts with ID 1 and increments the number each time a font is sent to the printer. You can optionally enter any font ID number you like, from 0 – 32767. Note that Downloadwin does not remember the font ID numbers used between separate program runs.

Once you have specified the font, printer, and ID number click "**Download Font**". The program will tell you when the font download is complete. At this point you can select another font to download or exit the program.

Advanced Command Line Control



Starting with version 2.0 Downloadwin adds the ability to run silently from the command line and still work as a Windows interactive font downloader. In Windows mode, Downloadwin works exactly like the previous version 1.5. Start the program, select each font you want to download, specify your printer and ID number, and then download that font to your printer.

However, starting in version 2.0, every font you send to the printer generates a log entry in a file named Downloadwin.log. A new log file is created every time you start Downloadwin and send one or more fonts to your printer. This log file will be created in your "My Documents" or "Libraries\Documents" folder.

Windows XP:	My Documents\ Downloadwin.log
Server 20??:	Libraries\Documents\ Downloadwin.log
Windows 7:	Libraries\Documents\ Downloadwin.log
Windows 8:	Libraries\Documents\ Downloadwin.log
Windows 10:	Libraries\Documents\ Downloadwin.log

Once a log file has been created you can use it to make Downloadwin execute the same sequence of font downloads without any user interaction. Note that since Downloadwin creates a new log file every time you run it from within Windows, you want to use it once to create your master log file and then **rename this log file so it will not be overwritten**. Suppose we want to download three fonts to our 4100 laser printer. Run Downloadwin from Windows and send the fonts to your printer. Locate the Downloadwin.log file and rename it to **mydownloads.log**. Here is the sample log file:

```
; This log file was produced by the Windows Font
; Download Tool. You may drop this file's icon
; onto the tool's icon to download these files
; automatically.
```

```
:"HP LaserJet 4100 Series PCL" 1 "J:\pcl\sig014.usp"  
:"HP LaserJet 4100 Series PCL" 2 "E:\Products\MICR-PCL\MI100C08.L4P"  
:"HP LaserJet 4100 Series PCL" 3 "E:\Products\MICR-PCL\REV20SE2.L4P"
```

You can make Downloadwin repeat the sequence of font downloads any number of times by running the program from the command line or in a batch file with the log file as a command line argument. This example assumes both the utility and log file are located in the same folder and you are running the tool from that folder. You can alternately supply full driver and path names for either or both files. So from DOS or a batch file use the command:

```
downloadwin mydownloads.log
```

You can also create log files to control Downloadwin using any text editor. Start each line with a ":" (colon) followed by the printer name. If the printer name includes spaces the entire printer name must be enclosed in quote characters. The printer name is followed by a space and the ID number you wish to assign to that font (0 – 32,767). Finally, put a space between the ID number and the path and name of the PCL font file. Once again, if the path includes any spaces you must enclose the entire path and font name in quotes. So to create a log file named test.log, run your text editor and enter:

```
:"Printer 1 name" ID# "first font to download"  
:"Printer 2 name" ID# "second font to download"  
:"Printer 3 name" ID# "third font to download"
```

In general, it is easier to use the Downloadwin program to create the log file rather than edit one by hand.

Elfring Fonts Inc
4N899 W Mary Dr
St Charles, IL 60175

630-440-2456

Copyright 2007 – 2020 by Elfring Fonts Inc.